

Unearth the value of your information assets through **Bosch**



Data Warehousing and Business Intelligence (DW/BI)

Robert Bosch Engineering and Business Solutions



BOSCH
Invented for life

“Through 2012, more than 35% of the top 5000 global companies will fail to make insightful decisions about significant changes in their business and markets due to underinvestment in their information infrastructure and business user tools.”
-- Gartner Inc.

The challenges in consolidating, propagating and federating the information are getting severe day by day and despite substantial investment, organizations are unable to fully utilize the information they possess. CIOs / Managers need a performance management mechanism to identify root causes of failure, and organizational resources to address shortfalls.

DW/BI with a wide range of tools, technologies and platform from simple reporting to complex predictive analysis and along with solid data governance methodologies enable organizations to share, use and uncover the value hidden in information assets.

RBEI DW/BI services with proven technical, domain expertise, and CMMi Level 5 processes and methodologies help you build smart, agile and aligned solutions to precisely deliver business results.

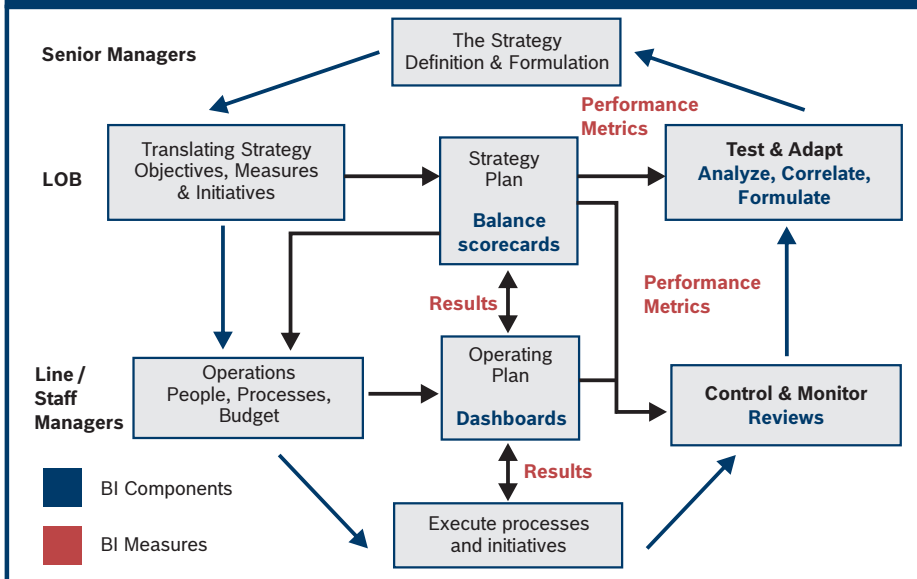
RBEI Service offerings

RBEI BI services cover the BI spectrum – Strategy implementations, Application development, Application Migration and Validation and Management

Key offerings:

- ▶ **BI Strategy implementations:**
 - Business case developments, release management
- ▶ **DW/BI governance practices:**
 - KPI based development and enforcement of data governance practices
- ▶ **Application development:**
 - Start schema design, dimension modeling, data integration, decision based reporting, test strategy, application deployment
- ▶ **Migration & planning:**
 - Data migration in heterogeneous environment

RBEI rightly 'positioned' to deliver you business results:



About us

Robert Bosch Engineering and Business Solutions Limited (RBEI), is a 100% owned subsidiary of Robert Bosch GmbH, one of the world's leading global supplier of technology and services, offering end to end engineering, IT and Business solutions.

With over 7000 associates, we are the largest software development center of Bosch, outside Germany, indicating we are the Technology Powerhouse of Bosch in India. We have a global footprint with presence in US, Europe and the Asia Pacific region. We are ISO 9001:2008 certified (2009), appraised at CMMI-L5 (2006) and also ISO 27001 (2009). We have five state-of-the-art facilities spread across Bangalore and Coimbatore in India and Ho Chi Minh City in Vietnam.

Our Mission

Committed to deliver the enduring Bosch Advantage through Quality and Innovation.



Sales Offices

Robert Bosch Engineering and Business Solutions Limited
123, Industrial Layout, Hosur Road
Koramangala, Bangalore 560 095
India

Robert Bosch Technical and Business Solutions GmbH
Daimlerstraße 1
Si 712, Schwieberdingen
Baden-Wuerttemberg - 71701
Germany

Robert Bosch Ltd
P.O.Box 98; Broadwater Park
North Orbital Road
Denham, Uxbridge
Middlesex UB9 5HJ
UK

Robert Bosch Corporation
38000, Hills Tech Drive
Farmington Hills, MI 48331
USA

Bosch Corporation
3-6-7, Shibuya-ku
Tokyo 150-8360
Japan

rbei.sales@in.bosch.com
www.boschindia.com/RBEI

The RBEI Advantage

- ▶ BI competency center to address a wide spectrum of business intelligence needs ranging from data integration, analytical reporting to migration strategies
- ▶ Accredited experience in BI-technologies:
 - Databases - Oracle, SQL-Server
 - ETL tools - Informatica, Oracle Data Integrator
 - BI tools - Business Objects, SAP-BW, OBI-EE, Hyperion, Qlikview
 - Source ERP Systems: SAP, Oracle, Microsoft
 - Adaptors: Adaptors to extract data from SAP ERP system (module dependant), Oracle ERP, custom applications in Oracle, Microsoft
- ▶ CMMi Level 5 processes and methodologies mapped to industry wide DW/BI best practices, templates, unique testing methodologies, checklists and standards
- ▶ Customer appreciated data governance methodologies for improving return on information by de-risking
- ▶ Oracle partner accreditation
- ▶ Flexible pricing models
- ▶ Language competency: German language experts with 6 levels of certification

Accredited examples

Data Integration:

A large manufacturing client desired data governance council for a large scale Oracle data-warehouse project.

Problem: Data Integration across heterogeneous ERP landscape and data valuation.

Solution: Implementation of enterprise wide data integration, data ranking and standardization. Quality rules and dashboards for Data Evaluation.

Results: Improved Data coverage by 12%, Data Quality by 32%, Return on Information by 15%.

Data Migration:

A leading manufacturing client had to migrate the data across 125 applications.

Problem: Challenges at adequate testing strategies, prioritization, data federation and performance using Informatica tool.

Solution: Developed unique test strategies, prioritized the data movement, handled complex communication across different teams in different geographies.

Results: Client met project deadline with optimized revenue.

Performance Management:

A leading manufacturing client wanted to improve supplier-buyer relationship thereby improving the quality of sourced material.

Problem: Integration of the data across extranet and predicting the possible quality of source material.

Solution: Laid the foundation for "what-if" analysis to predict the possible quality of sourced material for decision makers to initiate necessary actions.

Results: Vision realization and improvement of year-on-year 20% in quality of sourced material.