

Intermittent Vertical Bagger with Various Retrofit Options

SVI 2620



BOSCH

Invented for life



Benefits

- ▶ Entry level machine with easy upgrade capabilities
- ▶ Economic retrofit of corner seal and doypack style unit
- ▶ Low machine height enables higher production speed and increases overall equipment effectiveness (OEE)

Packaging Versatility

The SVI is capable of performing multiple standard bag styles, such as pillow bags, side gusseted bags and stand up block bottom bags as well as corner seal, doypack and zip applications.

Application Versatility

The SVI is designed to package an unlimited variety of food and non-food products, such as powders, bakery and confectionery, tea, coffee as well as pet food and non-food products such as detergents.

Film Material Versatility

The flexible machine offers heatsealing and polysealing options, with freely adjustable sealing temperatures according to product specification.

Easy Integration

The modular machine design of the SVI with various up- and downstream interfaces allows for easy integration of: dosing devices (augers, weighers, cup fillers, liquid pumps), coffee valve applicators, gas flushing, printers, labelers as well as checkweighers.

Machine Design

The low machine height facilitates a compact product stream, leading to higher speed and increased efficiency and ergonomics.

Retrofits Made Easy

The SVI is a price competitive machine that can be easily upgraded according to customer needs and changing business conditions. A corner seal unit can be easily integrated, as the machine height does not need to be changed or adapted. This is a significant benefit particularly when already having a dosing platform in place. Furthermore the SVI offers an economic doypack retrofit, by easily turning the machine cross seal jaw housing to a 90 degrees position.

Module++

As part of the Bosch Packaging Technology portfolio, the modular machine design of the SVI allows an easy integration with other packaging equipment such as cartoners or case packers for secondary packaging.

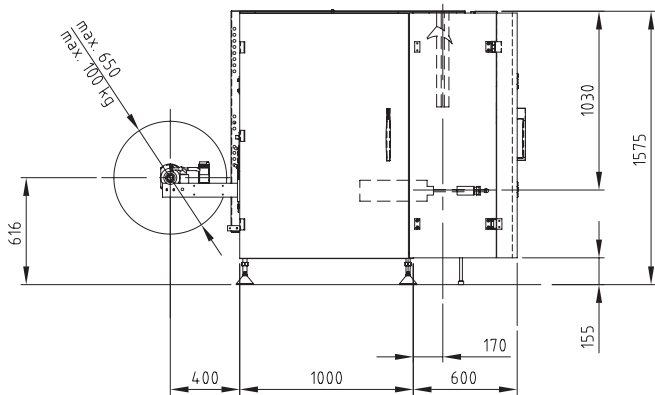
Left: Film transport upgradeable from friction to vacuum belts
 Middle: User friendly HMI
 Right: SVI forming set



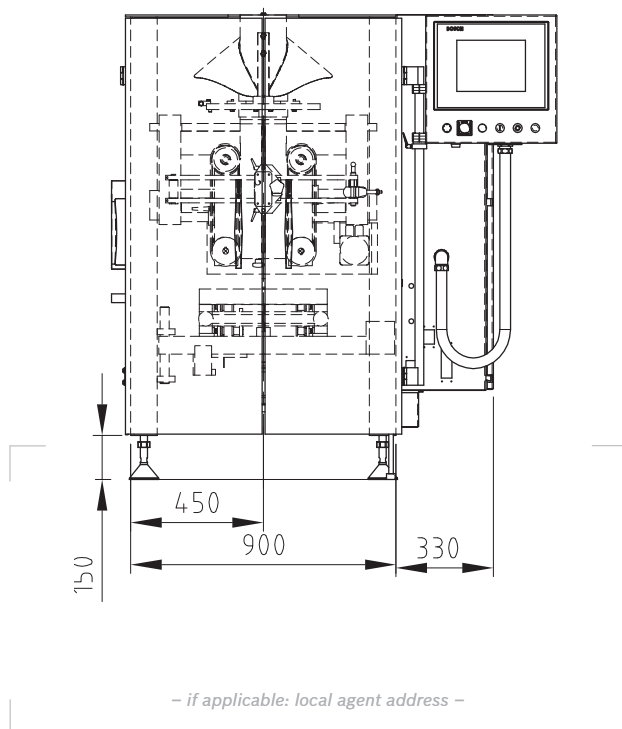
Options

- ▶ Automatic web tracking control
- ▶ Block bottom device
- ▶ Heat Sealing and PE welding systems
- ▶ Anti-static devices
- ▶ Chain packages
- ▶ Hole punch device for top bag seam
- ▶ Machine constructed of corrosion-proof materials
- ▶ Product -protective gas flushing
- ▶ Addition of corner sealing option or doy-style pack
- ▶ Integration of coffee valve applicator

Machine Footprint SVI 2620 – Side View



Machine Footprint SVI 2620 – Front View



Technical Specifications

Mechanical output	
SVI 2620:	10–120 bags/min
Bag length	
SVI 2620:	100–400 mm
Bag width	
SVI 2620:	60–260 mm
Stand up bags	
SVI 2620	
Width:	50–230 mm
Depth:	30–125 mm
Total width + depth:	80–260 mm
Connected electrical load	
11 KVA, 230/400V, 50/60Hz, 3-phase + N	
Compressed air requirement	
0,5 l/cycle at minimum pressure of 5 bar	
Machine weight	
SVI 2620:	approx. 920 kg
Machine dimensions	
SVI 2620:	1.230 x 2.100 x 1.575 mm (W x D x H)
Surface coating	
Metallic silver, smooth satin finish.	
Packaging materials	
Imprinted or non-imprinted off the reel packaging materials.	
Core inner diameter	
70–77 mm	
Reel outer diameter	
Max. 650 mm	
Degree of protection	
IP54	

Head Office:
 Bosch Limited, Packaging Technology Division
 N4, Phase IV, Verna Industrial Estate,
 Verna, Salcete, Goa – 403722
 Tel: +91 (832) 669 - 2002/2003
 Fax: +91 (832) 669 - 2028
 Mail: boschpackaging@in.bosch.com

Service Help Desk:
 +91 97665 82000 , +91 832 669 2000
 Chennai : Tel: +91 44 28153916/3917, Fax: +91 44 28279355,
 Mobile: +91 9176650628
 Bangalore : Tel : +91 80 41768201, Fax: +91 80 41768106,
 Mobile +919880596101
 New Delhi : Tel: +91 11 23340865/23348261/63,
 Mobile: +91 9818313312
 Mumbai : Tel: +91 22 24914644, Mobile: +91 9820366608
 Kolkatta : Tel : +91 33 22277740/22264570/5360,
 Mobile: +91 9831017871